

Face - skin

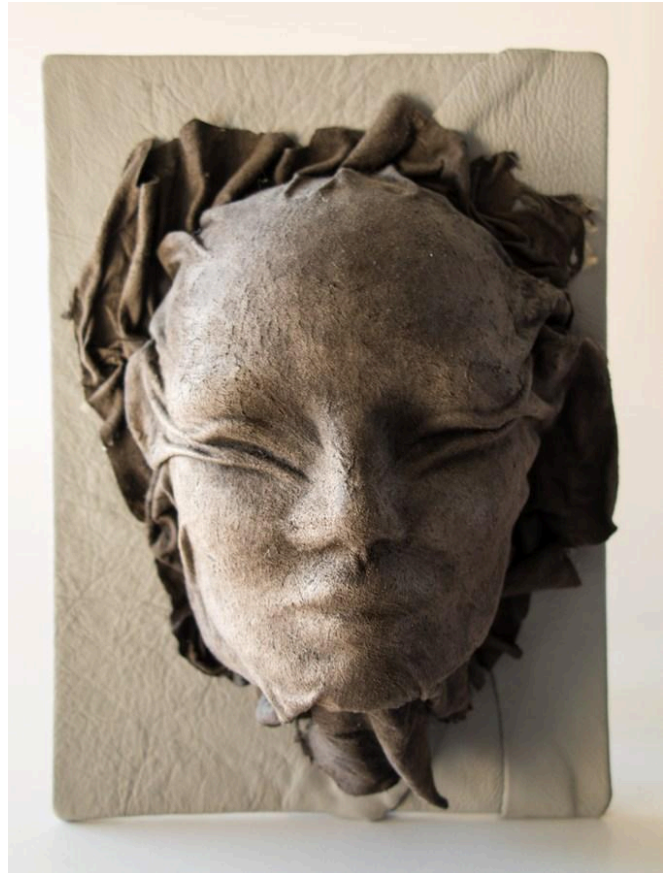
Slightly different decoration for the wall - but I like it that way. The face is made of leather. Leather can be shaped when soaked.

See below how to approach it...

You will need:

A flamingo face (you might be lucky enough to get a used one), skin (not grain leather)

Glue gun/glue, a picture frame with canvas or other board to put the face on.



You do like that.

With a large bread knife or other sharp object, cut the flamingo face in half so that you cut off the "back of the head" and it becomes flat (can be placed on a plate)

The skin is soaked until it is well and thoroughly soaked. In water.

The skin is taken out of the water and twisted quite easily. I have chosen to turn the back of this one the piece of skin out - so that I get the rough surface as the visible part.

It's a bit of patient work - you have to pull, twist, press and shape the piece of skin down over the face - not so hard that the

KNITFREAK . COM

FACE - MADE OF LEATHER

flamingo behind takes damage. When you are happy with the shape, let the piece of skin dry while it is on the flamingo's face. It must be completely dry...

When it has dried, you must take it off very carefully and apply glue to the flamingo's face - then put the piece of skin back on. Let it dry.

Mount the skin face on a plate - possibly coated or painted. Glue it on with a glue gun and it's ready to hang.

It is important that you are working with leather - and not grain leather. Core leather is too stiff.